



AXIS Health System

SUBSTANCE USE DISORDER (SUD) TREATMENT

SUD TREATMENT PHILOSOPHY

Axis offers treatment based upon the [American Society of Addiction Medicine \(ASAM\)](#) standards using a multi-dimensional screening tool to determine the treatment needs of the whole person. Axis offers a variety of SUD treatment options from prevention services to high intensity treatment. Treatment is designed to assist the patient in progressing toward the agreed upon goals and outcomes. Treatment is always patient-centered and designed to engage the patient in the “least restrictive and appropriate care”.

HOW TO ACCESS OUR SERVICES

You can call the Axis [location nearest you](#) and ask about our “SUD” programs. You will be directed to a trained Peer Navigator who will learn more about your needs and schedule you with the appropriate Axis clinician. The clinician will then complete an assessment with you in order to establish the appropriate level of care that is right for your needs.

OUR CLINIC LOCATIONS

CORTEZ

- ◆ [Cortez Integrated Healthcare](#)

DURANGO

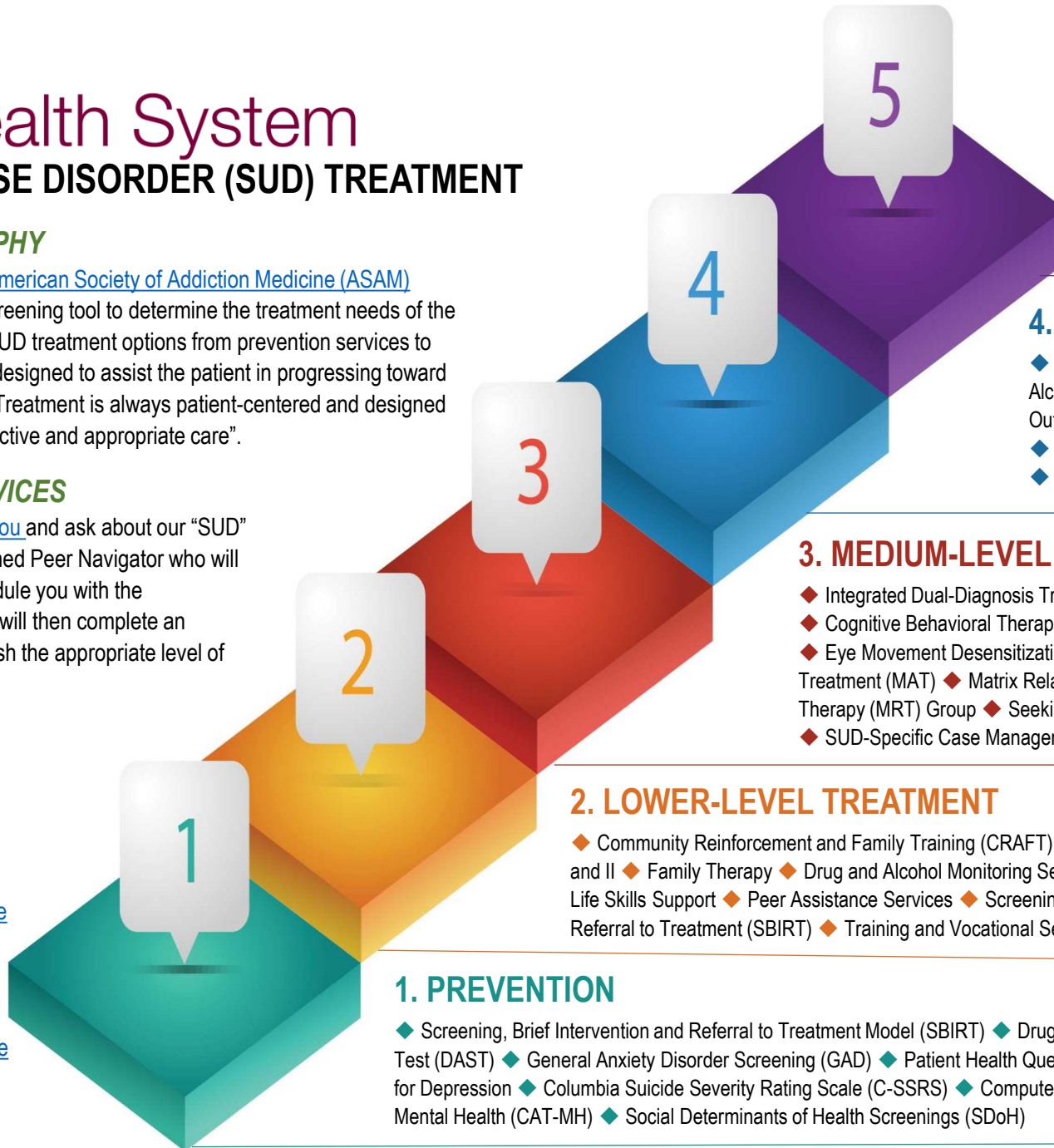
- ◆ [Columbine Behavioral Healthcare](#)
- ◆ [Crossroads at Grandview](#)
- ◆ [La Plata Integrated Healthcare](#)

DOVE CREEK

- ◆ [Dove Creek Integrated Healthcare](#)

PAGOSA SPRINGS

- ◆ [Archuleta Integrated Healthcare](#)



1. PREVENTION

- ◆ Screening, Brief Intervention and Referral to Treatment Model (SBIRT) ◆ Drug Abuse Screening Test (DAST) ◆ General Anxiety Disorder Screening (GAD) ◆ Patient Health Questionnaire (PHQ-9) for Depression ◆ Columbia Suicide Severity Rating Scale (C-SSRS) ◆ Computer-Adaptive Test for Mental Health (CAT-MH) ◆ Social Determinants of Health Screenings (SDoH)

2. LOWER-LEVEL TREATMENT

- ◆ Community Reinforcement and Family Training (CRAFT) ◆ DUI Education Level I and II ◆ Family Therapy ◆ Drug and Alcohol Monitoring Services ◆ Nutrition and Life Skills Support ◆ Peer Assistance Services ◆ Screening, Brief Intervention and Referral to Treatment (SBIRT) ◆ Training and Vocational Services

3. MEDIUM-LEVEL TREATMENT

- ◆ Integrated Dual-Diagnosis Treatment ◆ Jail-Based Treatment Services ◆ Outpatient Therapy ◆ Cognitive Behavioral Therapy (CBT) ◆ Dialectic Behavioral Therapy ◆ Early Recovery Group ◆ Eye Movement Desensitization Reprocessing (EMDR) ◆ Family Therapy ◆ Medication Assisted Treatment (MAT) ◆ Matrix Relapse Prevention Groups ◆ Early Recovery ◆ Moral Reconciliation Therapy (MRT) Group ◆ Seeking Safety ◆ Strategies for Self-Improvement and Change (SSIC) ◆ SUD-Specific Case Management ◆ Women in Recovery Group ◆ Women's Specific Treatment

4. HIGH-LEVEL TREATMENT

- ◆ DUI Level IV+ ◆ Medication Assisted Treatment (MAT) ◆ Drug and Alcohol Monitoring Services ◆ Outpatient Family Therapy ◆ Enhanced Outpatient (EOP) ◆ IV Drug Use Program ◆ Jail-Based MAT Program ◆ Jail Discharge Transition Program ◆ Treatment for Pregnant Women ◆ Treatment for Pregnant Women with Dependent Children

5. INTENSIVE LEVEL TREATMENT

- ◆ Intensive Outpatient Program (IOP) ◆ Drug and Alcohol Monitoring Program ◆ Assertive Community Treatment (ACT)

OTHER AXIS SUPPORTS:

- ◆ 24/7 Axis Care Hotline
- ◆ Community Intervention Programs
- ◆ Healthcare for the Homeless (HCH)
- ◆ Withdrawal Management (Social Detox)